

Universal wet and pressure sensitive adhesive

UZIN KE 2000 S

Dispersion adhesive for all common resilient coverings, textile coverings, wall coverings and UZIN insulation/installation underlays

MAIN APPLICATION FIELD:

UZIN KE 2000 S is a strong dispersion adhesive with short open time, and long working time for application with the pressure sensitive, wet set, contact and double drop bonding method. For use on floors and walls.

For interior use.

SUITABLE ON / FOR:

As a universal adhesive for:

- ▶ Textile floor coverings with all common backings
- ▶ Light needle punch or woven carpet
- ▶ PVC design floor coverings
- ▶ Linoleum in sheets up to 3,2 mm
- ▶ On warm water underfloor heating system
- ▶ Exposure to castor wheels in accordance with DIN EN 12 529 from 1 mm thickness of levelling compound
- ▶ Heavy wear in residential, commercial and industrial locations

As a special adhesive for:

- ▶ Homogeneous and heterogeneous PVC or CV floor coverings in sheets and tiles
- ▶ Rubber floor coverings in sheets up to 4 mm (e.g. noraplan®)



PRODUCT BENEFITS/FEATURES:

UZIN KE 2000 S is a strong dispersion adhesive with short waiting time and long working time. It can be used as a pressure sensitive or wet-set adhesive and used via the double drop method. For use on floors and walls. For interior use.

- ▶ Odourless during and after application
- ▶ Excellent working properties
- ▶ Good tack with stringing
- ▶ Solvent-free

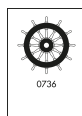


TECHNICAL DATA:

Packaging	plastic bucket
Pack size	14 kg, 6 kg, 2 kg
Shelf life	12 months
Colour, wet	cream white
Colour, dry	transparent
Consumption	180 - 380 g/m ²
Open time	10 - 45 minutes*
Working time	15 - 120 minutes*
Minimum application temperature	15 °C at ground level
Loadable	after 24 hours*
Joint sealing	after 24 hours*
Final strength	after 3 days*

*At 20 °C and 65% relative humidity, depending on the type of floor covering and the absorbency of the substrate.

**Max. acceptable consumption for shipbuilding (IMO): 320 g/m²



EXTENDED APPLICATIONS:

For polyurethane coatings

SUBSTRATE PREPARATION:

The subfloor must be sound, load bearing, level, dry, free from cracks, clean and free from material which would impair adhesion (e.g. dirt, oil, grease). The surface must be vacuumed, primed and levelled thoroughly. Suitable primers and levelling compounds can be found in the UZIN product guide. The substrate must be tested in accordance with applicable standards and bulletins and any deficiencies must be reported. Always allow primer and levelling compound to dry well all the way through. Refer to the Product Data Sheets for other products used.

APPLICATION:

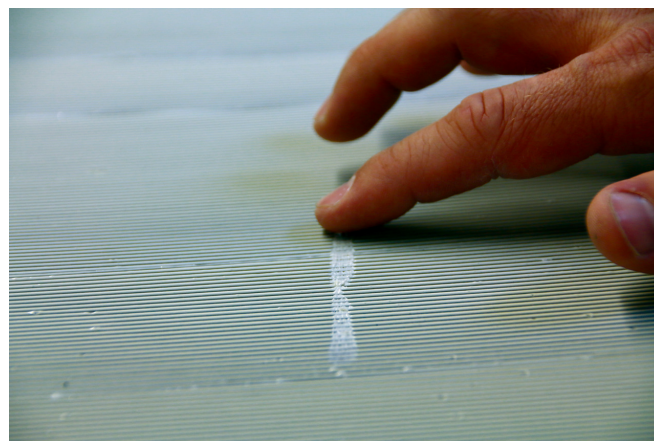
1. Apply adhesive uniformly with suitable notched trowel onto the substrate and allow to dry partially according to the application amount, the indoor climate, the absorbency of the substrate and the type of floor covering. Do not apply more adhesive than can be laid with good wetting of the back of the covering within the working time.
2. Install the floor covering within a short open time and ensure the adhesive ridge is pressed out. Rub in or roll over and apply weight against any flooring deformation. Ensure that air is not trapped under the covering. Allow the area to rest for 20 minutes and then roll over again and rub in at edge and seams.

Wet Set Adhesive Method: Install the floor covering while the adhesive is still wet, roll and ensure there is no trapped air. Please note that if the floor is laid in the wet adhesive there will be no or little initial tack.

Double-Drop-Method: Install the floor covering into the wet adhesive and rub in or roll. Pull back immediately and allow the backing of floor covering and substrate to partially dry until a tack can be felt (finger test see picture below). The adhesive ridge should not be visible. Reinstall the floor covering and roll to ensure there is not trapped air.

Wall applications: Apply the adhesive with a nylon roller onto the prepared wall, spread immediately with an appropriate notched trowel and allow to tack. Apply the covering and rub over.

Contact applications: Depending on the type of covering apply the adhesive with a trowel or a roller on the back of the floor covering and on the substrate. After the adhesive dries, install floor covering and roll over.



CONSUMPTION INFORMATION:

Toothing	Coating/Backing	Consumption approx.*	IMO**
A5	Smooth, e.g. CV floor coverings	180 - 200 g/m ²	yes
A1	Smooth e.g. LVT	200 - 280 g/m ²	yes
A2	Slightly Structured e.g. PVC, LVT, rubber	250 - 320 g/m ²	yes
B1	Structured, e.g. carpet, linoleum etc	320 - 380	no

*At 20 °C and 65% relative humidity with tempered adhesive buckets.

**Max. acceptable consumption for shipbuilding (IMO): 320 g/m²

CONSUMPTION:

Floor covering on levelled substrates "Wet / Semi-wet application"	Trowel notch	Waiting time*	Working time*
CV floor coverings, LVT	A5	5 - 15 minutes	10 - 20 minutes
PVC floor coverings, rubber	A2	10 - 20 minutes	10 - 20 minutes
Textile floor coverings, linoleum	B1	15 - 25 minutes	10 - 30 minutes
Needle punch	B2	15 - 25 minutes	20 - 45 minutes

Floor covering on dense substrates "Pressure sensitive application"	Trowel notch	Waiting Time*	Working Time*
PVC floor coverings, e.g. on UZIN KR 410 or dense installation underlays	A5	30 - 40 minutes	1 - 2 hours

Floor covering on dense substrates "Double drop application"	Trowel notch	Waiting time*	Working time*
Rubber on smooth, dense coatings	A5	10 minutes, remove floor covering again then 20 minutes	45 minutes

*At 20 °C and 65% relative humidity.

IMPORTANT NOTES:

- ▶ Shelf life of 12 months in original packaging when stored in relatively cool conditions. Frost-resistant up to -14 °C. Carefully and tightly reseal opened buckets and use the content as quickly as possible. Allow adhesive to reach room temperature before use.
- ▶ Optimum work conditions are 18 – 25 °C, floor temperature above 15 °C / 59 °F and relative air humidity below 65 %. Low temperatures and high air humidity lengthen, whilst high temperatures and low air humidity shorten the drying time.
- ▶ Humid substrates may cause secondary emissions and odours. Therefore a good drying of the levelling compound must be observed on levelled substrates.
- ▶ Direct bonding on old adhesive residues can cause inter - actions and lead to unpleasant odour. Therefore old layers should ideally be removed. In all cases adhesive residues must be reworked with a barrier primer and levelled generously with a self-levelling compound at sufficient thickness (usually 3 mm)
- ▶ Before bonding floor coverings must be adequately acclimatised and free from tension and must be adapted to the common indoor climate for future use.
- ▶ In case of extreme temperatures from exposure to light, heavy mechanical strain from pallet trucks, fork lifts, etc. or when exposed to wetness from the top, a synthetic resin adhesive such as UZIN KR 430 must be used. Obtain application advice in case of doubt.
- ▶ For the applications coating, sealing, cleaning and maintaining the products of UZIN Care can be used to (UZIN Basic Cleaner, UZIN Turbo Protect Plus, UZIN Resilient Sealer, UZIN Resilient Care, UZIN Refresher). For further information please refer the separate product data sheets.
- ▶ The following standards, regulations and publications are applicable and especially recommended:

- DIN 18 365 “Working with floor coverings”
- TKB specification sheet “Assessment and preparation of surfaces for floor covering and wood floor covering”
- BEB specification sheet “Assessment and preparation of surfaces”
- TKB specification sheet “Adhesion of PVC floor coverings”
- TKB specification sheet “Adhesion of elastomeric floor coverings”
- TKB specification sheet “Adhesion of linoleum floor covering”
- TKB specification sheet “Adhesion of textile floor covering”

SEALS OF QUALITY & ECOLABELS:

- ▶ Solvent-free
- ▶ EMICODE EC 1 PLUS / Very low emission
- ▶ DE-UZ 113 / Environmentally friendly because of low emissions

COMPOSITION:

Polymer dispersion, preservation agents, mineral aggregates, additives and water.

PROTECTION OF THE WORKPLACE AND THE ENVIRONMENT:

Solvent-free. Use of barrier cream and ventilation of the work area are recommended. When fully dried, has a neutral odour and presents no physiological or ecological risk. Basic prerequisites for best possible indoor air quality following floor covering work are conformity to standards of the working conditions, as well as thoroughly dry substrate, primer and smoothing compound.

DISPOSAL:

Where possible, collect product residues and re-use. Do not allow dispersal into drains, sewers or ground. Empty, scraped and drip-free containers are recyclable. Containers with liquid residue, as well as the liquid product, are classed as Special Waste. Dried product residues are classed as Construction Waste.